

MAY 2017

# E C Leader



## From the Bishop

### INSIDE THIS ISSUE:

Bishop's Top Ten Prayer & Praise 2

News from StoneRidge Community 3

News from Benefits 4

News from Ministerial Development Community 5

News from Evangelical Seminary 6

News Kingdom Extension Community 7

News Global Ministries Community 9



We have a house phone—you know, one that plugs into the wall and uses a number we've had for something like forever. Through the wonder of technology, if we have our television turned on and we get a call on that phone we can see on the TV who's calling us. I'm not sure why we still have that phone or number. The only people who call it are telemarketers and since I don't want to talk to them I don't answer the phone.

I read an article about the Cold Calling vs. Social Selling debate. Apparently it is a huge debate raging in sales companies over the best way to contact customers and sell products. The author

noted a number of trends: people don't like being called, more people are moving away from phones and onto social/digital platforms, and

people don't like being interrupted. He sums it up by saying "We are living through a big transition stage in the sales industry where cold calling is not a dying sales activity." The good news, according to the author, is retailers no longer have to interrupt people with cold calls—what needs to be done is to build relationships with present and future customers.

Easter is over, and for the church-calendar-people among us one of the next big days is Ascension day when we com-

memorate Jesus' ascension back into heaven. You already know what I'm going to say next: just before he ascended Jesus gave his followers the Great Commission. I can sum it up in just three words: "go" and "make disciples."

I'm afraid that for too long the church had defined discipleship as Bible study; you just need to learn the facts, the stories, the lessons; that's what God wants. But God wants so much more than followers who can win a game of Bible trivia. He wants individuals who will allow His Holy Spirit to conform every aspect of  
*(continued on page 2)*



## Bishop's Top Ten Prayer & Praise

1. Join with me in praying that the Holy Spirit would guide us as we gather near the end of the month for our denomination's National Conference.
2. Pray for safety and good weather as Kevin Henry, Mark Draper, and Ralph Owens ride their bicycles from Huntington, IN to Myerstown, PA in support of Evangelical Seminary. (You can also make a donation to support them at <https://evangelical.edu/event/the-great-cycling-adventure/>)
3. Pray for the work of the Stationing Committee as they continue to work on finding pastors and congregations who can "fit and flourish."
4. Pray for me as I begin to focus on the Episcopal Address for National Conference as well as other leadership responsibilities.
5. Ask the Lord to bless our camping ministries (Camp ECCO, OH; Rock River Bible Camp, IL; and Twin Pines Camp, PA) as they finalize summer staff and programming.
6. Praise the Lord for the gifted candidates who met with the Board of Examiners and will be recommended for credentials at National Conference.
7. Thank and praise the Lord for those who will be graduating from Evangelical Seminary's various degree and non-degree programs and impact our culture with the Good News about Jesus.
8. Praise the Lord that during the days of National Conference we will be able to welcome a new international conference into the EC family—the Evangelical Congregational Church of Latin America.
9. Yard work is not one of my fun things to do; but praise God for the ability to be outside and interact with neighbors.
10. Praise God for the encouraging reports we are receiving of the work and outreach going on in our international EC conferences. God is at work all around the world!



*(continued from page 1)*

my life to Him and His will. So how do we share the Good News about Jesus and make Jesus followers? It's through the relationships we have and develop. Now it's time to get down to living in our neighborhoods with Christ in our hearts. Start (or continue) getting on boards and committees to fix things and volunteering in our communities; start (or continue) meeting over coffee and getting to know your neighbors at whatever coffeehouse they'll go to; start (or continue) making and building relationships with non-Christians. The success of the Good News in our culture does not depend on cold calls

or how attractively it is packaged; but on how honestly real Christians live out their lives in our homes and communities.

God created each of us to live in relationships—a relationship with him and with other people. Growth, discipleship, maturity, and service (and lots of other good things) all happen in relationships. So who can you build a relationship with?

In Christ's service,



## News from STONERIDGE

### Easter Fun Event Held at Towne Centre and Poplar Run♥

Prior to the Easter holiday StoneRidge Towne Centre and StoneRidge Poplar Run of Myerstown each held Easter Fun Events for the children of their employees and for the larger community. Over 100 children and their families came out to take part in Easter egg hunts, holiday crafts, games and refreshments. Special prizes were also awarded which included gift baskets filled with toys and candy.

“Each year StoneRidge offers community events around the holidays,” said Tom Maiello, director of public relations and communications for StoneRidge Retirement Living Communities. “We are delighted to offer these fun events for our team members’ families and for the general public. Everyone is welcome! I encourage the public to keep an eye on the newspapers and also on our website at [www.StoneRidgeRetirement.com](http://www.StoneRidgeRetirement.com) to discover upcoming events that they can participate in, particularly around Easter and Christmas,” said Maiello.



*Poplar Run resident Jean Kobzoff, gives a hearty hug to one of our Easter Fun guests. From left, residents David Cramp and Martha Klein look on.*

*\*StoneRidge Poplar Run is one of four retirement communities comprising StoneRidge Retirement Living. Locations include StoneRidge Towne Centre and StoneRidge Poplar Run both in Myerstown, Church of God Home in Carlisle and Schoolyard Square in Pine Grove. For more information about options available for you or a loved one, please call 717-866-3553. StoneRidge Retirement Living is all about just that—Living!*

## 2018 Pastoral Assessment Center Enrollment

The deadline for registering for the 2018 Pastoral Assessment Center is now June 1, 2017. The date and location for the PAC are January 17-20, 2018 at the campus of Evangelical Seminary.

There is no cost to those who are seeking credentials in the EC Church. Because ministry requires more of the family than other typical vocations, the wife of each applicant is required to attend. Please make those arrangements in adequate time.

Please enroll by requesting an entrance application from [jgbyerly@eccenter.com](mailto:jgbyerly@eccenter.com)

## News from BENEFITS CORPORATION

We are waiting on additional information to complete the **worker's compensation billing** to PA and New Jersey churches. Hopefully the missing information will be received soon and the invoices can be sent to the churches. Early indications are for a decrease in the worker's compensation premiums.

Churches not included in the denominational workers compensation group policy; Ohio, Illinois and Kentucky churches, however your individual state mandates workers compensation coverage. Please confirm that all employees of the church are covered by workers compensation insurance. Per EC Benefits Corporation policy H.3.b, churches not covered by the denomination group workers compensation policy shall submit proof of workers compensation coverage by July 1 of each year. Please submit proof of your worker's compensation to:

EC Benefits  
100 West Park Avenue  
Myerstown, PA 17067  
OR Fax 717-866-7583 or email [dking@eccenter.com](mailto:dking@eccenter.com)

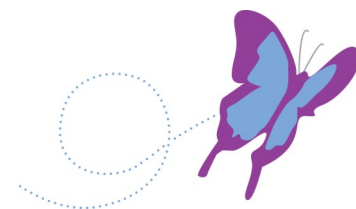
**Retirement:** As in years past Jennifer Buehler, Wells Fargo Advisors, had the most visitors during National Conference but please remember she is available for retirement planning assistance year round. Jennifer may be reached at 1-855-603-8146. We hope all our pastors are actively planning for their retirement; make consistent contributions to your 403(b) or Roth account (in addition to your church's contributions) and at a minimum spend an hour or two annually with a financial professional reviewing your investments. Please don't delay in becoming personally involved in your retirement planning.

EC Benefits Corporation has five **open lay trustee positions**. Trustees represent the members of the Benefits Corporation who are the EC National Conference churches and pastors. Trustees provide insight and direction to the benefit plans offered to EC active and retired pastors, the benefit plans include: health insurance, pension, worker's compensation, short term disability and the Manna Fund. Trustees are expected to attend three Board of Trustee meetings per year with the slight possibility of additional meetings if an unexpected situation arises that requires trustee action. A commitment of about 15-20 hours per year would be required. If you or someone you know is interested in becoming an EC Benefits Trustee please contact Jodi Earhart at the EC Church Center, [jeahart@eccenter.com](mailto:jeahart@eccenter.com) or 717-866-7581 to request a trustee application.

Please contact David King, Benefits Administrator, [dking@eccenter.com](mailto:dking@eccenter.com) or myself [khenry@eccenter.com](mailto:khenry@eccenter.com) with any questions or problems, 1-800-866-7581.

Kevin Henry  
Executive Director

David King  
Benefits Administrator





## News from MINISTERIAL DEVELOPMENT COMMUNITY

### What Happens at PAC Stays at PAC... (Sorta)

The Pastoral Assessment Center (PAC) has been in operation since 2001 and has been going through significant changes over the last few years under the direction of Rev. Kirk Marks. As we have improved the process of assessment, we have also been realizing that much more than assessing an individual's calling takes place during this week. We have been preparing these pastoral couples for entrance into the EC Church family and have provided them with some significant tools and understandings necessary for ministry.

Likewise, a new foundational piece has been implemented this past year that involved Rev. Al Giles meeting with the applicants through online huddles for the months leading up to PAC. This introductory phase provided them with some connection and comfort with one another, as well as acquainting them with a process of self-awareness in terms of being a disciple and then transferring these concepts to new disciples.

Two individuals who went through the PAC in 2017 have answered a few questions about their experience this past year.

1. What did you learn from the pre-PAC discipleship huddles with Al?

**Andrew:** *The pre-PAC huddle was helpful in that it was nice to meet the guys also going through PAC. To be able to share about one another's lives and begin the discipleship process with one another.*



**Cameron:** *A disciple-making pastor who wishes to see growth in others, must first see growth in himself. It begins with a proper understanding of identity with the Father.*

2. How did the PAC help you to understand the EC Church better?

**Andrew:** *PAC helped me understand that the EC Church is very dedicated to helping a man discern and verify his calling by God. They really work to get you to know and understand what God is saying to you in a very short period of time.*

**Cameron:** *The PAC revealed the heart-posture of the EC Church: a fresh and Spirit-driven character that focuses on disciple-making (and not blatant institutional church organization). Influencing others, organic evangelism, disciple-making, etc. can happen in everyday conversations. Relational and honest transparency will create godly influential space in our conversations.*

3. What tools and resources were most helpful?

**Andrew:** *The tests that spoke into my personality and temperament were the most helpful. They opened my eyes to some things that I hadn't previously seen in myself.*

**Cameron:** *The Engel Scale is a scale that illustrates the journey of a lost person to becoming a mature believer. It opened my eyes that evangelism and sanctification occur with numerous decision-making steps. The journey to knowing God doesn't always happen*

*in the linear progression that the scale proposes, but it is a great resource to know and understand, because it illustrates the journey of finding God, and growing in Him.*

4. What would you say to someone entering next year's PAC?

**Andrew:** *I would say to anyone entering PAC next year to go into the experience with no preconceived notions. Go into PAC open to what God is saying to you through the assessors, who truly have your best interest in mind.*

**Cameron:** *The PAC is not a sterile clinic where they probe you, break you down, and make you feel like you can't do anything right. Quite the opposite, the PAC is a safe place of relationships and a dwelling place for spiritual men and women, devoted to equipping and assessing those who have heard (or think they hear) God's call to pastoral ministry.*

If you are sensing a call to pastoral ministry, it is essential that you first discuss this matter with your lead pastor at your church, talk to other leaders who are able to observe your gifts and abilities in action. If they provide you with positive (and constructive) feedback, your next step would be to contact me at [jgbyerly@eccenter.com](mailto:jgbyerly@eccenter.com) or call me at 570-294-3467. The 2018 PAC information can be found on page 3 of this issue.

Blessings,

Rev. Jeffrey Byerly

Ministerial Development Associate

## News from EVANGELICAL SEMINARY

A note from Jimmy "Dean" Ehrman ...

In about twenty-one days, the seminary community is going to recognize just over thirty people who will be receiving degrees or certificates. Of those thirty, six of them are affiliated with the E.C. Church. Allow me to say "well done" to them and to you as a denomination for recognizing the value of ongoing study and preparation.

I'm of the opinion that our society has too few "rights of passages" for its members—times when we pause to celebrate individuals after they have passed through a time of rigor and testing. This is one of those moments. Five of the six ECers being recognized are graduating from the Institute for Church Leadership. The Bishop and I want to invite you to join us at the Seminary's Dech Chapel on Monday, May 15 to celebrate them! In the meantime, join Evangelical Seminary and Church Center in extending congratulations to:

**Masters of Arts in Ministry**

**Robert Valentine**

**Certificate of Completion—Institute for Church Leadership**

**Andrew Brubaker**

**Donald Kerns**

**James Reppert**

**Robert Romig**

**Leroy Walbert**

# News from KINGDOM EXTENSION COMMUNITY

The KEC team is available to assist you, to walk with you, as you seek to move your church toward a more intentional Kingdom ministry model. Each team member, a practitioner of both discipleship and missional ministries, is eager to listen to your questions and concerns, your dreams and struggles. We will brainstorm with you and cheer on your leadership team as you take steps toward the vision God has given you for your church and community. Consider the following ways we might be helpful...

## Developing Direction

We are prepared to help you define and implement a Kingdom mindset and strategy for extending the Kingdom within your ministry context. We will walk with you as you adopt biblical ministry concepts that will lead to church health, growth and expansion, as well as planting the gospel among yet unreached people and, if possible, launch new ministries leading to new churches.

## Defining Potential

We are prepared to help you assess the potential of your congregation for extending the Kingdom within your community. We will explore with you Kingdom extension models for your local context, including cultural differences. We will help you assess your needs and potential for planting the gospel and churches

in your community.

## Discovering Possibilities

We are prepared to help you discover and adopt (or adapt) Kingdom extension concepts that make sense in your ministry context. We will help you think through opportunities and solutions for Kingdom extension in your community, including processing the various aspects of cultural diversity.

## Delivering Resources & Training

We are prepared to help you access up-to-date seminars, workshops and resources

(books and web-related materials) that address creative solutions for extending the Kingdom. We will help you discuss as leadership teams or congregations these Kingdom extension concepts.

## Developing Partnerships

We are prepared to help you engage others—pastors, leadership teams or congregations—in discussions about Kingdom extension within your cultural setting. We will help you connect with district and affinity cohorts concerning Kingdom extension learning and ministries.

Contact Les Cool, Kingdom Extension Associate (717-951-8433 or [lcool@eccenter.com](mailto:lcool@eccenter.com) or [revcool@ptd.net](mailto:revcool@ptd.net)) to begin the conversation.



# 2017 NATIONAL CONFERENCE

## Press on

“I focus on this one thing: Forgetting the past and looking forward to what lies ahead, I press on to reach the end of the race and receive the heavenly prize for which God, through Christ Jesus, is calling us.” PHILIPPIANS 3:13-14



May 24-26, 2017  
Messiah College, Grantham, PA

REGISTRATION FORMS ARE AVAILABLE ONLINE AT

[WWW.ECCENTER.COM](http://WWW.ECCENTER.COM)

Deadline for registration is: April 21st.

### FEATURES:

- Rev Run 5K Run/Walk/Bike  
Morning, Wednesday, May 24
- First Time Lay Delegate Orientation  
Morning, Wednesday, May 24
  - Holy Communion  
1:00 pm, Wednesday, May 24
- Welcoming EC Church of Mexico  
Evening, Wednesday, May 24
- “Kingdom & Community Experience”  
Afternoon, Thursday, May 25
  - Credentialing  
Morning, Friday, May 26

### WOMENS’ PROGRAM:

- Wednesday Afternoon  
Tina Kidd Johnson, pastor’s wife at Canyon Falls, KY will be the speaker.
- Thursday Morning  
Tim Bell, Director of Regional Ministries for One Mission Society
- Friday Morning  
Beth Grimm, Wycliffe Bible Translators

Scheduling has been planned so the ladies can join the Conference for the Episcopal Address, worship services, and the Thursday afternoon “Kingdom & Community Experience.”



# News from the GLOBAL MINISTRIES COMMUNITY

## Missionary Updates:

Please continue to keep **Lamar & Janice Stoltzfus** in your prayers. Janice has



begun her chemo treatments, and will have to do radiation after that. Pray that she can maintain the stamina she needs to fight off any germs or infections. Pray for Lamar as he continues with their deputation schedule in addition to caring for Janice.



We are glad to report that **Dan Moury** and his team had a successful trip to eastern Africa, and the filming went well, in

spite of triple-digit heat (not good for video equipment!) There was a problem with one of their return flights, which meant they were delayed returning to the USA, but they finally made it, tired yet exuberant at the opportunity to film the celebration of the Baka people receiving the New Testament in their heart language.

## MMK VBS Project:

Remember that our **2017 VBS project** is to raise \$10,000 for the Liberian Literacy Project. Bishop Rev. Abraham Powell is finalizing plans to set up teaching stations at various EC

churches in Liberia, to teach children and adults how to read the Bassa language by using the Scriptures as the main textbook. Five minute VBS Lessons will be available on our website soon.

## Sympathy:

We wish to offer our sympathies to **Rev. Nobuo Abe**, Chairman of the EC Church-Japan, and his extended family, on the passing of his father. Rev. Abe's father passed away in late March. Mr. Abe was also grandfather to **Tomoyuki and Yoriyoshi Abe**, our church planters in Japan. Mr. Abe accepted the Lord and was baptized several years ago, so the family has the joy of knowing that is not a final goodbye. Please keep the extended Abe family in prayer.

## Celebration:

The **EC Church of Mexico** will become its own National Conference at the EC Church-USA National Conference this month at Messiah College. The EC Church of Mexico will be the third international church



Rev. Elias & Myrna Martinez

to become a National Conference, joining India and Japan. A delegation, including the current field leader Rev. Elias Martinez and his wife, Myrna, along with Rev. Juan & Rosalba Zuniga, another couple in leadership, will be in attendance.



## Evangelical Congregational Church

100 West Park Avenue

Myerstown, PA

717-866-7581

[www.eccenter.com](http://www.eccenter.com)

[eccenter@eccenter.com](mailto:eccenter@eccenter.com)

ONE  
ONE  
ONE  
ONE  
ONE  
ONE  
ONE  
ONE  
ONE  
ONE

“For there is **one** body and **one** Spirit, just as you have all been called to **one** glorious hope for the future.

There is **one** Lord, **one** faith, **one** baptism, and **one** God and Father, who is over all and in all and living through all!”

EPHESIANS 4: 4-6

# Press on

“I focus on this **one** thing: Forgetting the past and looking forward to what lies ahead, I press on to reach the end of the race and receive the heavenly prize for which God, through Christ Jesus, is calling us.” PHILIPPIANS 3:13-14

## “Kingdom & Community Experience”

On Thursday afternoon of the National Conference we will join in a brand new learning experience as the Executive Director and Associates facilitate a series of missional conversations. We will participate in a group project of discovery as we find out how to help an imaginary EC Church that is struggling to impact its community with the Gospel. Together we will uncover some of the issues that have caused their current situation, as well as the resources and strategies available to the local leaders to help the church make a difference in their neighborhood and beyond.



Rev. Les Cool  
Kingdom Extension  
Community Associate



Mr. Kevin Henry  
Executive Director



Rev. Dr. Gary Kuehner  
Church Health  
Community Associate



Rev. Jeffrey Byerly  
Ministerial Development  
Community Associate



Rev. Randy Sizemore  
Global Ministries  
Community Associate

# MAY 2017

Sun	Mon	Tue	Wed	Thu	Fri	Sat
	1	2	3	4 National Day of Prayer	5 Day of Prayer for the EC Church	6
7	8 Prayer Mobilization Team Mtg.	9	10	11	12	13
14 <b>Mother's Day</b>	15 Church Pension Contribution due <u>Health Insurance Premium due</u>	16	17	18 ETS Golf Tournament	19	20
21	22	23	24	25	26	27
28	29 <b>Memorial Day</b> Church Center Closed	30	31	<b>NATIONAL CONFERENCE—MESSIAH COLLEGE</b>		

**Ministry Funds to:**

E.C. Church  
100 West Park Avenue  
Myerstown, PA 17067

**Medical/Insurance/Pension Payments to:**

Benefits Corporation  
100 West Park Avenue  
Myerstown, PA 17067

# JUNE 2017

Sun	Mon	Tue	Wed	Thu	Fri	Sat
				1	2	3
					Day of Prayer for the EC Church	
4	5	6	7	8	9	10
	PENTECOST					
	Day of Prayer for Church Planting					
11	12	13	14	15	16	17
	Prayer Mobilization Team Mtg.			Church Pension Contribution due		
	Student Aid Offering			Estimated Tax Due		
	Health Insurance					
18	19	20	21	22	23	24
FATHER'S DAY						
25	26	27	28	29	30	

**Ministry Funds to:**

E.C. Church  
100 West Park Avenue  
Myerstown, PA 17067

**Student Air Offering to:**

E.C. Church  
100 West Park Avenue  
Myerstown, PA 17067  
(designate— Student Aid Offering)

**Medical/Insurance/Pension Payments to:**

Benefits Corporation  
100 West Park Avenue  
Myerstown, PA 17067



# JULY 2017

Sun	Mon	Tue	Wed	Thu	Fri	Sat
2 Day of Prayer for Church Planting	3	4 <b>INDEPENDENCE DAY</b> Church Center closed	5	6	7 Day of Prayer for the EC Church Church Center closed	1 8
9	10	11	12	13	14 Church Center closed	15 Church Pension Contribution due
17	18 Benefits Corp. Mtg.	19	20	21	22 Church Center closed	Health Insurance Premium due
23	24	25	26	27	28 Church Center closed	29
30	31	Herndon Campmeeting				
Herndon Campmeeting						

**Ministry Funds to:**

E.C. Church  
100 West Park Avenue  
Myerstown, PA 17067

**Manna Fund to:**

Benefits Corp.  
100 West Park Avenue  
Myerstown, PA 17067  
(designate— Manna Fund)

**Medical/Insurance/Pension Payments to:**

Benefits Corporation  
100 West Park Avenue  
Myerstown, PA 17067