

# E.C. Leader

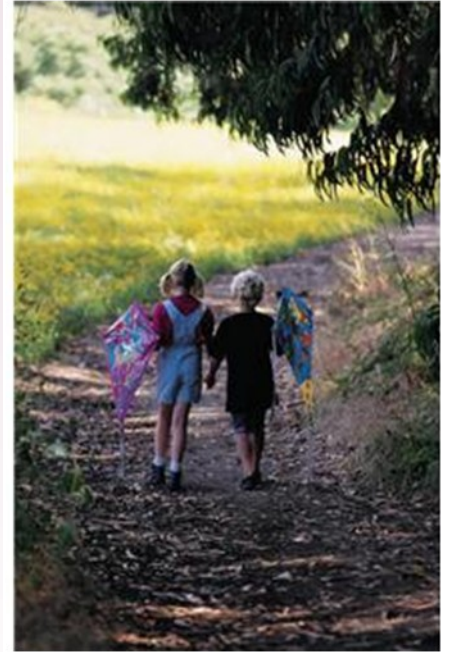
## Friends

I was recently exchanging emails with someone who's not a pastor but serves in a leadership position. This individual had seen my "Meet the Bishop" video where I was trying to find the right hat for the Bishop of the Evangelical Congregational Church to wear. If you've seen the video, there were lots of choices. If you are a pastor, lay leader, or a leader of any kind, you know there are times when you struggle to know which hat you're supposed to be wearing each day. If that's not bad enough, the reality is that in leadership we change hats numerous times every day! It may be the "Leader" hat, followed by the "administrator" hat, and the "servant" hat, only to be followed by some other hat. Then you walk in the door at home and it's the "spouse" hat or "parent" hat. And those are just a few of the possibilities!

One of the hats I've become more aware of in recent months is the "friend" hat. Leadership is never easy and not always fun. It doesn't matter if you're a pastor or lay leader, if you are a leader in church or at work; as they say "it's lonely at the top." Every survey I have ever read about pastoral life indicates that it is one of the loneliest professions. Too many of us are truly alone in the middle of a crowd. That's not good and it's not healthy. The antidote to loneliness is friendship. Over the past few months I have gained a greater appreciation for the people in my life I can call "friend". We all need people in our lives we can sit and talk with, laugh with, cry with, and be honest with; people that see me and love me simply as me.

Valentine's Day is February 14. (Hopefully, that's not breaking news to most of you.) Did you ever notice that something happens to our celebration of Valentine's Day as we get older? Really young children give Valentines to just about everybody in their class; boys and girls

*(continued on page 2)*



### Inside this issue

---

Bishop's TOP TEN Prayer & Praise Items	3
Save the Date from Church Planting Commission	3
News from Global Ministries	4
News from Benefits/ Compensation	5
News from Evangelical	6
News from Twin Pines	6



Evangelical Congregational Church  
 100 West Park Avenue  
 Myerstown, PA 17067  
 717-866-7581  
[www.eccenter.com](http://www.eccenter.com)  
[eccenter@eccenter.com](mailto:eccenter@eccenter.com)

(Friends continued from page 1)



alike. Then, as we “mature” something happens. The Valentine takes on a different connotation. A boy gives it to one special girl: “Will you be my Valentine?” That’s a whole different story! Then next thing you know you’re standing in the Hallmark store buying a \$7.00 Valentine’s Day card for your wife. (I’m not objecting to buying a card for my wife, although I am hoping to find a cheaper card.) What I’m trying to figure out is how I got from expressing my appreciation and love for all my friends as I did when I was a child to limiting my appreciation to just one person? It is true that she is my “bestest” friend. But that doesn’t mean I shouldn’t find some way this month to express my appreciation and my love for all those who are my friends. Maybe I need to send them an email, or a note; maybe a quick phone call or actually sit down with them face-to-face and tell them how much I value their friendship in my life. (Now there’s a radical concept!) I’m not sure how I’m going to do it, but I know I need friends and I need to be a friend. Join me in finding the time this month to take off the other hats, put on the “friend” hat and express your appreciation for those people who make a real difference in your life. (And don’t forget to buy your spouse a pretty card too!)

A handwritten signature in black ink, appearing to read 'Gary Russell'.

God has moved in the heart of **Gary Russell**, a volunteer youth director at Immanuel E.C. Church, Adamstown, to help launch the Rebirth Christian Endeavor Campaign. Churches in the Lancaster and Lebanon area are beginning to learn about C.E. and the powerful impact God makes through this discipleship process. Part of the rebirth campaign is helping churches connect for Christian fellowship events in their local areas.



Gary has been involved with C.E. since his teen years at Trinity E.C. Church, Royersford. Gary says, “I’m interested in putting together county-wide events that will allow our youth to get to know others within Christian Endeavor and develop events that we would not be able to do ourselves. Christian Endeavor is the organization that gives all churches common ground in teaching our youth to stand up, take part, and take the lead.”

Contact info for Gary is: 717-278-6162 or [Lancaster-county-cd@cemidatlantic.org](mailto:Lancaster-county-cd@cemidatlantic.org)

## The Bishop's TOP TEN Prayer & Praise Items

1. Pray for the Stationing Committee as they begin to evaluate opportunities for churches and pastors requesting changes. Ask for the Lord to provide assignments that allow all to 'fit and flourish'.
2. Ask the Lord to provide wisdom as our National Conference commissions and committees begin to work on their 2013 budgets.
3. It's not too soon to pray for our 2012 National Conference. Pray that the Holy Spirit would lead all our times of worship and business in a new and powerful way.
4. Pray that the Lord would lead our denomination's leaders as we gather together in February to look at re-energizing the Transformational Strategic Plan which was passed by National Conference in 2010.
5. Pray for the special Global Ministries Task Force as they look at how we, as a denomination, can do a better job of supporting the ministries of the EC Church around the world.
6. Praise the Lord for the many opportunities to share His love in meaningful ways during this Valentine month.
7. Praise Him for the committed missionary work being done by our EC missionaries all around the world. (Did you know that even our Mission Conferences in other parts of the world are sending out their own missionaries to neighboring countries? Praise the Lord!)
8. Praise God for his constant care and unconditional love poured out on us every day (especially the days when we don't feel we deserve it.)
9. Praise Him for His blessing on our denomination with another successful Pastoral Assessment Center. And pray for the Lord's continued leading in the lives of the candidates.
10. Praise Him for the students at Evangelical Seminary who are beginning the spring semester preparing to serve the Lord all around the world.

### SAVE THE DATE Fresh Expressions Vision Day Thursday, May 3, 2012

The Church Planting Commission will be co-sponsoring A Fresh Expressions Vision Day on Thursday, May 3, 2012 in the York area. Fresh Expressions resources churches regarding missional (intentional) ministries to the community. "A fresh expression is a form of church for our changing culture, established primarily for the benefit of people who are not yet members of any church." A Vision Day is designed to inspire and encourage, display models of fresh expressions and answer questions. The day is for anyone interested in renewal within an established congregation, or building relationships and serving the communities in which they live or work. Speakers touch those who have real questions about fresh expressions and mission-shaped church and/or who have started something new and need some practical help. Pastors, leadership team members and ministry representatives are all sure to benefit from a Vision Day.

## Available Speaking Dates:

Randy would love to visit with your congregation to share the exciting things God is doing through the EC Church around the globe. He can share with your church on a Sunday morning in worship or Sunday school or both. Randy is also willing to come at other times that may suit your situation better. Carla is always willing to share a mission oriented junior church program when they come. Randy has the following Sundays available in the spring:

February 12, 16

March 4, 11, 18, 25

April 1, 29

May 20, 27

June 3

Other dates are also available throughout the remainder of the year. Contact Randy at [rsizemore@eccenter.com](mailto:rsizemore@eccenter.com) or call the GMC office.

## News from Global Ministries



### 1. Mission Minded Kids Rally:

There will be a spring Mission Minded Kids Rally for the Delaware/Susquehanna Regions on **Saturday, March 3rd, 2012**. The rally will be held at Trinity E.C. Church, Boyertown. There will be missionary speakers, games, crafts, and curios for the children to purchase. Information will be coming soon, but mark this date on your calendars and plan on being at one of the most exciting and lively events on the E.C. calendar!

### 2. Costa Rica visit:

Please pray for the GMC team as they travel to join the annual conference sessions of the EC Mission Conference of Costa Rica, February 16-21. Team members include DGM Randy & Carla Sizemore, Rev. Carlos Kelly, serving as translator, and Jerry Virtue representing the Latin American International Church Committee.



### 3. Delaware Region Mission Leader's Brunch:

The Global Ministries Commission empowers over 500 international churches in 6 nations, facilitates 53 mission workers in 12 countries working with 20 different sending agencies, ministers to the marginalized in many of these same countries and creates global Christian through informational and educational initiatives. All of this is accomplished through the cooperation of the local EC Churches here in the USA. Without the prayer, financial and practical partnership of our local churches, the mission movement in the EC Church would grind to a halt. The local mission leaders and pastors in our churches are the important link in this chain of partnership!

With such a large ministry scope there are always updates, programs, changes, challenges and exciting developments to share with our local church partners! The GMC is hosting an informational Mission Leaders' Brunch on March 6, 2012 at the Superior Restaurant, Emmaus at 10:00 am (Each person will pay for their own meal!). Please join Randy Sizemore for this encouraging and informational gathering to learn what God is doing in and through the EC Church around the globe. Watch for your invitation letter in the mail and/or RSVP by February 27, to the GMC office: 717-866-7584 or [ecglobal@eccenter.com](mailto:ecglobal@eccenter.com).

### 4. GMC Task Force:

Please pray for a special task force appointed by Bishop Hill to review the breadth and scope of the Global Ministries Commission's ministry with special regard to its funding in order to assess its viability under the current structure. This Task Force has met on December 13, 2011; January 12, 2012 and will meet again on February 8, 2012.

## News from Benefits/Compensation

As announced in a previous email, the EC Benefits Corporation switched workers compensation carriers to Brotherhood Mutual, effective January 1, 2012. Churches will be pleasantly surprised by the decrease in the workers compensation invoice. These invoices will be sent to churches shortly. Also arriving soon will be the annual workers compensation audit forms. A workers compensation audit is required regardless of who the insurance carrier is. This change in workers compensation carriers will not affect the property and liability insurance group we are building with Church Mutual. Due to state regulations, only churches in PA, MD and NJ are covered under the EC Benefits Workers Compensation policy. EC Churches outside of these states, please follow your state's workers compensation regulations and secure coverage for your pastor and other paid staff. At the end of the EC Leader is a letter from James O. Bower Insurance on instructions for filing a worker's compensation claim. This letter and the associated state forms will be on the website under Benefits Corporation, then Forms.



Please remember that the EC Benefits administrative fee is due from churches on April 15, 2012, retirees are not subject to this fee. The 2012 disability premiums were due January 15, 2012. Please remit them as soon as possible. The due dates for the administrative fee and the disability premium are listed in the Treasurer's Guide available on the EC Church website [www.eccenter.com](http://www.eccenter.com).

Treasurers please begin using the 2012 Ministry Fund forms for January offerings. Offerings collected in December 2011 should be remitted on the 2011 Ministry Fund forms.

The Annual Reports and fourth quarter Ministerial Update forms are both due by January 25, 2012 to Rev. Ken Wiest, statistician, at the E.C. Church Center. You can also email the reports to [blong@eccenter.com](mailto:blong@eccenter.com)

### Tax Updates:

2011 W-2 forms are due to pastors and employed staff by January 31, 2012 and 1099-MISC forms to Independent Contractors are also due by January 31, 2012. Please check your respective state and local regulations for due dates on filing with the respective state and local tax authorities.



The 2012 Business Mileage Reimbursement rate remains at \$.555/mile.

The 2% reduction in the Social Security tax was extended until February 29, 2012. This is the employee portion of the tax. Churches who reimburse pastors the employer portion of the Social Security tax which did not change and remains at 7.65% for the combined Social Security and Medicare taxes.

Kevin Henry  
Controller  
[khenry@eccenter.com](mailto:khenry@eccenter.com)



## News from Evangelical Seminary



♥ **Spring Semester** officially begins with Convocation in Dech Chapel on January 31, at 1:30 p.m. Rev. Craig Smith, Atlantic Northeast District Executive for the Church of the Brethren, will bring the address, and Dr. Laurie Mellinger will be installed as Dean of Academic Programs. A reception will follow in Zinn Commons. All are welcome!



♥ We praise God for a record number of applications from new students, many of them planning to enroll this spring. Just a reminder... it isn't too late for you to register for a course! In addition to various Biblical and practical pastoral courses, two other classes of general interest include Spiritual Warfare, taught by Dr. Doug Buckwalter, and Theology of Suffering, taught by Dr. Ken Miller. Check the seminary website at [www.evangelical.edu](http://www.evangelical.edu) for the complete schedule.

♥ The Pennsylvania Department of Education has approved our proposal for a new Master of Arts in Christian Leadership. We rejoice in their very positive endorsement and, pending further approval from ATS next month, anticipate launching this distance education program in the fall. Requirements for the degree can be met by a combination of online and on-campus sessions.

♥ Please continue to pray that the United Methodist University Senate will approve Evangelical as an institution to train UMC ministers when it meets on January 31.

♥ **Looking Ahead:** Dr. Tony Blair will keynote the March 6 Faith in the Marketplace breakfast, and Dr. Billy Abraham, internationally known Wesley scholar from Perkins School of Theology, will present the 2012 Wesley Forum on March 26. Check the seminary website for details and registration.

---

## News from Twin Pines



### Teach How They Learn Seminar, March 3, 2012

Twin Pines is sponsoring a work shop for anyone who teaches Sunday School, leads Bible studies, or works with youth in any way. The seminar will offer information on how to teach using different styles to meet the needs of those learning the material.

Jesus used the approach of meeting people where they are and this is the best way to teach as well. Come and join us for this seminar on March 3, 2012 at Twin Pines and hone your teaching skills. More information is available by emailing [learningseminar@twinpines.org](mailto:learningseminar@twinpines.org) or by visiting the Twin Pines website [www.twinpines.org](http://www.twinpines.org). You can also call the Twin Pines office at 570-629-2411 and speak to Shawn.

### Summer Camp

Now is the time to register for summer camp at Twin Pines. There are camps for kids and adults of all ages. For fathers and sons - "**Dads 'n Lads**" camp and for moms and daughters - "**Moms 'n Gals**" camp. This year "Moms

'n Gals" will be staying in cabins! Both programs are only half a week and provide a great opportunity for parents to connect with their kids. For the whole family Twin Pines offers "Family Camp" with activities for every member of the family. If "Family Camp" sounds like fun but you would just like to try it, there is a **new half-week "Family Camp"**. This program has all the same great activities but is only Sunday through Tuesday. Another



opportunity for adults is "**Adult Camp**", a special week for spiritual renewal, fun, fellowship, and interaction with other adults and the Twin Pines' summer staff. Returning for 2012 is the "**All Sports Camp**", directed by the staff of Push the Rock, a Christian based sports camp and seminar organization. Twin Pines also offers a wide variety of programs for kids of all ages. Twin Pines really does have a program for everyone!



If you are unsure of what camp you would like to attend, take a look at the summer camp schedule on the Twin Pines website, [www.twinpines.org](http://www.twinpines.org).

### Summer Staff

Twin Pines is currently in search of young people interested in Christian service for the summer staff. There are opportunities in the areas male counselors and lifeguards. If you or someone you know is interested in serving on summer staff in 2012 please contact Shawn Fetterhoff at [shawn@twinpines.org](mailto:shawn@twinpines.org). If you are looking for a life changing service experience, don't hesitate and apply today!

### Summer Volunteers

Are you looking for an opportunity to volunteer this summer? Are you 21 or older and willing to help in the kitchen or on maintenance? If you answered yes to these questions you could sign up to volunteer for a week at Twin Pines this summer. If interested in volunteering contact Shaw Fetterhoff at [shawn@twinpines.org](mailto:shawn@twinpines.org).



### Calling All Ladies

Do you enjoy Scrapbooking but can't find the time to work on your albums? Join us for the Twin Pines Scrapbooking Retreat on March 30-April 1, 2012. Come join us for fellowship, devotions, seminars, and of course, scrapbooking! Creative Memories consultant, Julie Kindig will be here to help with all your questions and will have scrapbooking tools on hand for

you to try out and purchase.

Registration is limited, so sign up today to secure your place! For more information or to get a registration form, please call the office or email our Guest Services Coordinator, Candace Sweigart, at [Candace@twinpines.org](mailto:Candace@twinpines.org). Registrations are to be received no later than March 1st. See you there!

### Summer Celebration

Join us **Saturday, June 2nd** from 10 am until 4 pm for an exciting day at Twin Pines Camp. Summer celebration is our official kick off to our summer ministry season. If you haven't been with us for summer celebration before, we have events for the whole family. Once again this year we will hold the Twin Pines Motorcycle Fun Ride. This ride will be through the Pocono Mountain area around Twin Pines. We will also hold our annual fishing tournament, have great food, and fun for the whole family. If you are interested in making this an overnight stay we also have accommodations available at a great rate! Visit our website [www.twinpines.org](http://www.twinpines.org) or contact Shawn at [shawn@twinpines.org](mailto:shawn@twinpines.org) for more information or to register for the motorcycle ride or to stay overnight.





**JAMES O. BOWER  
INSURANCE, INC.**

2145 Market Street, Camp Hill, PA 17011 • Tel (717) 763-5668 • Fax (717) 763-5517 • Toll Free: 1-800-326-7200

---

**ATTENTION: All National Conference of the Evangelical Congregational Churches**

**EFFECTIVE 1-1-2012**

The conference Workers Compensation insurance company has changed. Our group policy is now with **Brotherhood Mutual** handled by the **James O. Bower Insurance Agency** in Camp Hill, Pa. Our agent is **Brandon Bower**.

Please adjust your contact information for all Workers Compensation questions and claims to:

**James O. Bower Insurance Inc.  
2145 Market Street  
Camp Hill, Pa 17011  
Phone 1-800-326-7200  
Fax 717-763-5517  
Website: [www.Bowerins.com](http://www.Bowerins.com)**

**Directions for submitting a Workers Compensation claim.**

1. Please gather all necessary information and complete the attached notice of injury form assigned to your state.
2. Please call the James O. Bower Insurance Agency at 1- 800-326-7200 and ask for a customer service representative in the Church Insurance Department. **You will need to indicate that you are calling as one of the churches on the National Conference of the Evangelical Congregational Church's Group Workers Compensation policy # 37W9A407601 with Brotherhood Mutual.**
3. After you make contact with a customer service representative they will ask you to either fax the completed Injury report form to them, or Email it to them.

Thank You,  
Brandon Bower  
James O. Bower Insurance Inc.  
American Church Group of NY LLC.

*The James O. Bower Insurance Agency specializes in writing church and ministry related insurance. Please contact Brandon Bower (484) 973-6111, [Brandon@bowerins.com](mailto:Brandon@bowerins.com) if you have an insurance need or question.*